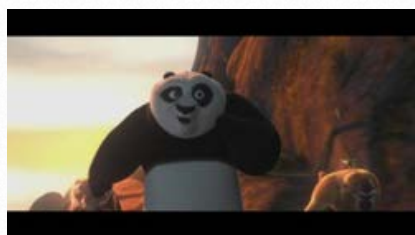


# Stanley Kwong

## Lead Lighter

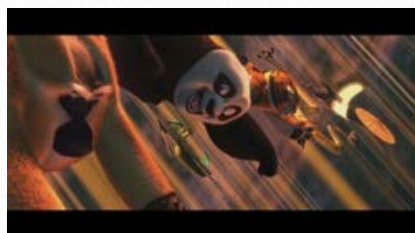
### Shot Breakdown



#### Kung Fu Panda 2

*Lighting and compositing*

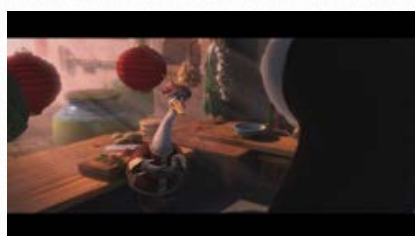
Setup light rigs, lit and composited all the elements of the shot, including the environment, characters and crowds in the background. Yes, there are crowds in this shot, as Po goes over the cliff you can see a village in the background with wolves chasing pigs, bunnies, etc.



#### Kung Fu Panda 2

*Lighting and compositing*

Setup light rigs, lit and composited all the elements of the shot, including the environment, characters and godrays.



#### Kung Fu Panda 2

*Lighting and compositing*

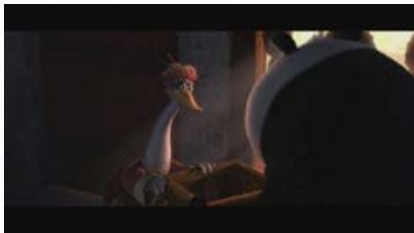
Setup light rigs, lit and composited all the elements of the shot, including the environment, characters, and godrays.



#### Kung Fu Panda 2

*Lighting and compositing*

Setup light rigs, lit and composited all the elements of the shot, including the environment and characters.



## Kung Fu Panda 2

*Lighting and compositing*

Setup light rigs, lit and composited all the elements of the shot, including the environment, godrays, and characters.



## Kung Fu Panda 2

*Lighting and compositing*

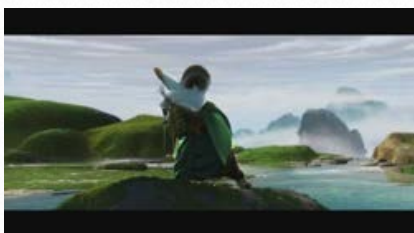
Setup light rigs, lit and composited all the elements of the shot, including the environment, reflection on the floor, haze and characters.



## Kung Fu Panda 2

*Lighting and compositing*

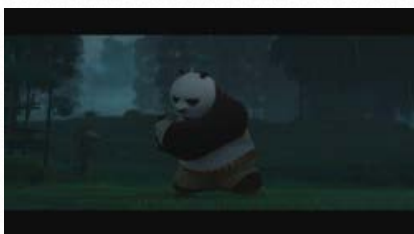
Setup light rigs, lit and composited all the elements of the shot, including the environment, characters and waterfalls. CG Supervisor helped setup the water, caustic maps, exterior hills, etc.



## Kung Fu Panda 2

*Lighting and compositing*

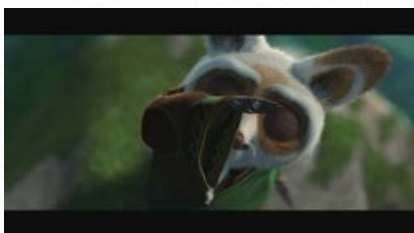
Setup light rigs, lit and composited all the elements of the shot, including the environment, characters and fx water.



## Kung Fu Panda 2

*Lighting and compositing*

Setup light rigs, lit and composited all the elements of the shot, including the environment, characters and fx rain.



## Kung Fu Panda 2

*Lighting and compositing*

Setup light rigs, lit and composited all the elements of the shot, including the environment, characters, water drop and fx water.



## Kung Fu Panda 2

*Lighting and compositing*

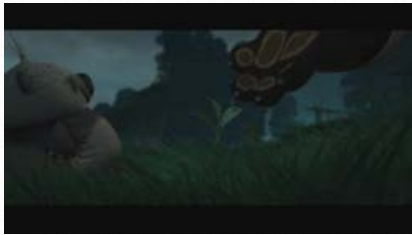
Setup light rigs, lit and composited all the elements of the shot, including the environment, characters, water drop and fx rain.



## Kung Fu Panda 2

*Lighting and compositing*

Setup light rigs, lit and composited all the elements of the shot, including the environment, characters, water drop and fx rain.



## Kung Fu Panda 2

*Lighting and compositing*

Setup light rigs, lit and composited all the elements of the shot, including the environment, characters, water drop and fx rain.



## Kung Fu Panda 2

*Lighting and compositing*

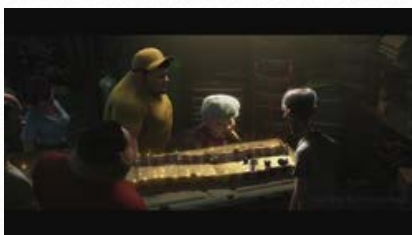
Setup light rigs, lit and composited all the elements of the shot, including the environment, Shifu and fx water. Lit the lightning pass and adjusted the timing in the comp.



## Turbo

*Lighting and compositing*

Setup light rigs, lit and composited all the elements of the shot, including the environment and characters.



## Turbo

*Lighting and compositing*

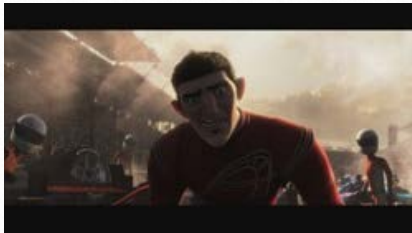
Setup light rigs, lit and composited all the elements of the shot, including the environment and characters.



## Turbo

*Lighting and compositing*

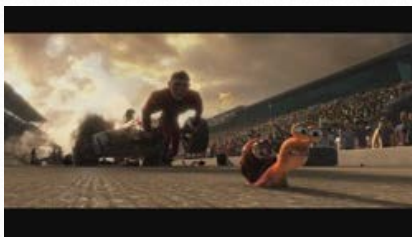
Setup light rigs, lit and composited all the elements of the shot, including the environment and characters.



## Turbo

*Lighting and compositing*

Setup light rigs, lit and composited all the elements of the shot, including the environment and characters.



## Turbo

*Lighting and compositing*

Setup light rigs, lit and composited all the elements of the shot, including the environment and characters.



## Monsters vs. Aliens

*Lighting and compositing*

Setup light rigs, lit and composited all the elements of the shot, including the environment and Bob. Bob was a challenge to light because he consisted of almost a dozen different render passes, refraction, diffuse, bubbles, etc. A lot of his lighting is done in the comp.



## Monsters vs. Aliens

*Lighting and compositing*

Setup light rigs, lit and composited all the elements of the shot, including the environment and Jello. Lighting Jello is surprisingly difficult. It's like the uncanny valley with food. Unless the jello is lit just right, it ends up looking like green glass.



## Monsters vs. Aliens

*Lighting and compositing*

Setup light rigs, lit and composited all the elements of the shot, including the environment and characters. If you look carefully, you'll see the house refracted through Dr. Roach's martini glass. The glass is actually refracting a card with a render of the house mapped onto it.



## MvA: Bob's Big Break

*Lighting and compositing*

Setup light rigs, lit and composited all the elements of the shot, including the environment and characters.



## MvA: Bob's Big Break

*Lighting and compositing*

Setup light rigs, lit and composited all the elements of the shot, including the environment, characters and dissolving fx.



## MvA: Bob's Big Break

*Lighting and compositing*

Setup light rigs, lit and composited all the elements of the shot, including the environment and characters.



## Madagascar 2: Escape 2 Africa

*Lighting and compositing*

Setup light rigs, lit and composited all the elements of the shot, including the environment and characters.



## Madagascar 2: Escape 2 Africa

*Lighting and compositing*

Setup light rigs, lit and composited all the elements of the shot, including the environment, characters and crowd characters.



## Madagascar 2: Escape 2 Africa

*Lighting and compositing*

Setup light rigs, lit and composited all the elements of the shot, including the environment, characters and crowd characters.



## Madagascar 2: Escape 2 Africa

*Lighting and compositing*

Setup light rigs, lit and composited all the elements of the shot, including the environment and characters. Worked with the surfacer to Look Dev the shark.



## Madagascar 2: Escape 2 Africa

*Lighting and compositing*

Setup light rigs, lit and composited all the elements of the shot, including the environment and characters. Worked with the surfacer to Look Dev the shark.



## Madagascar 2: Escape 2 Africa

*Lighting and compositing*

Setup light rigs, lit and composited all the elements of the shot, including the environment, characters and crowd characters.



## Madagascar 2: Escape 2 Africa

*Lighting and compositing*

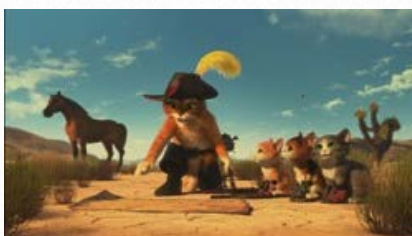
Setup light rigs, lit and composited all the elements of the shot, including the environment, characters and crowd characters.



## MvA: Mutant Pumpkins from Outer Space

*Lighting and compositing*

Setup light rigs, lit and composited all the elements of the shot, including the environment and characters, the crowd characters, the candy gun and the haze from the candy gun. Borrowed lighting setup for the house from another shot in the sequence.



## Puss in Boots: The Three Diablos

*Lighting and compositing*

Setup light rigs, lit and composited all the elements of the shot, including the environment and characters.



## Puss in Boots: The Three Diablos

*Lighting and compositing*

Setup light rigs, lit and composited all the elements of the shot, including the characters and environment.



## Madagascar 3: Europe's Most Wanted

*Lighting and compositing*

Setup light rigs, lit and composited all the elements of the shot, including the environment and lens flare.



## Madagascar 3: Europe's Most Wanted

*Lighting and compositing*

Setup light rigs, lit and composited all the elements of the shot, including the environment and crowd characters.



## Madagascar 3: Europe's Most Wanted

*Lighting and compositing*

Setup light rigs, lit and composited all the elements of the shot, including the environment, train and characters.



## Open Season

*Lighting and compositing*

Setup light rigs, lit and composited all the elements of the shot, including the environment, characters, crowd characters, and haze.



## Open Season

*Lighting and compositing*

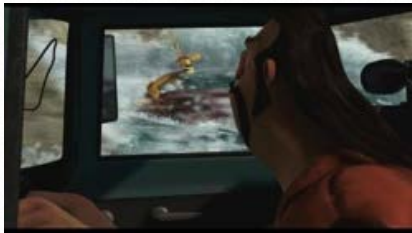
Setup light rigs, lit and composited all the elements of the shot, including the environment and characters.



## Open Season

*Lighting and compositing*

Setup light rigs, lit and composited all the elements of the shot, including the environment, water and characters.



## Open Season

*Lighting and compositing*

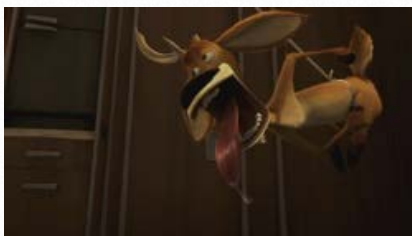
Setup light rigs, lit and composited all the elements of the shot, including the environment, water and characters.



## Open Season

*Lighting and compositing*

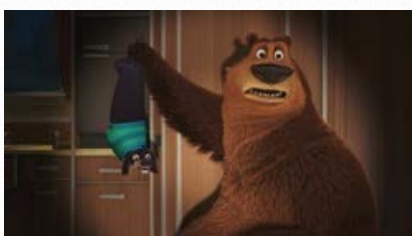
Setup light rigs, lit and composited all the elements of the shot, including the environment, water and characters.



## Boog & Elliot's Midnight Bun Run

*Lighting and compositing*

Setup light rigs, lit and composited all the elements of the shot, including the environment and characters.



## Boog & Elliot's Midnight Bun Run

*Lighting and compositing*

Setup light rigs, lit and composited all the elements of the shot, including the environment and characters.





## Shark Tale

*Lighting and compositing*

Setup light rigs, lit and composited all the elements of the shot, including the environment and characters.



## Shark Tale

*Lighting and compositing*

Setup light rigs, lit and composited all the elements of the shot, including the environment and characters.



## Shark Tale

*Lighting and compositing*

Setup light rigs, lit and composited all the elements of the shot, including the environment, characters, god rays and crowd characters.



## Shark Tale

*Lighting and compositing*

Setup light rigs, lit and composited all the elements of the shot, including the environment, god rays and characters.



## The Madagascar Penguins in A Christmas Caper

*Lighting and compositing*

Setup light rigs, lit and composited all the elements of the shot, including the environment, the fish and characters.



## The Madagascar Penguins in A Christmas Caper

*Lighting and compositing*

Setup light rigs, lit and composited all the elements of the shot, including the environment and characters.



## The Madagascar Penguins in A Christmas Caper

*Lighting and compositing*

Setup light rigs, lit and composited all the elements of the shot, including the environment and characters.



## The Madagascar Penguins in A Christmas Caper

*Lighting and compositing*

Setup light rigs, lit and composited all the elements of the shot, including the environment and characters.